



SJ HEALTH
San Joaquin Health Centers

IS PROUD TO BE A

Primary Care Medical Home

(PCMH)

What is a PCMH?

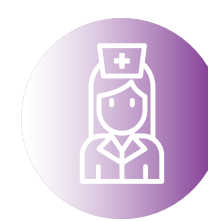
You have a team of people helping you be as healthy as you can be. This team includes:



Your Provider



Medical Assistant



Nurse



Health Educator



Behavioral Health Provider

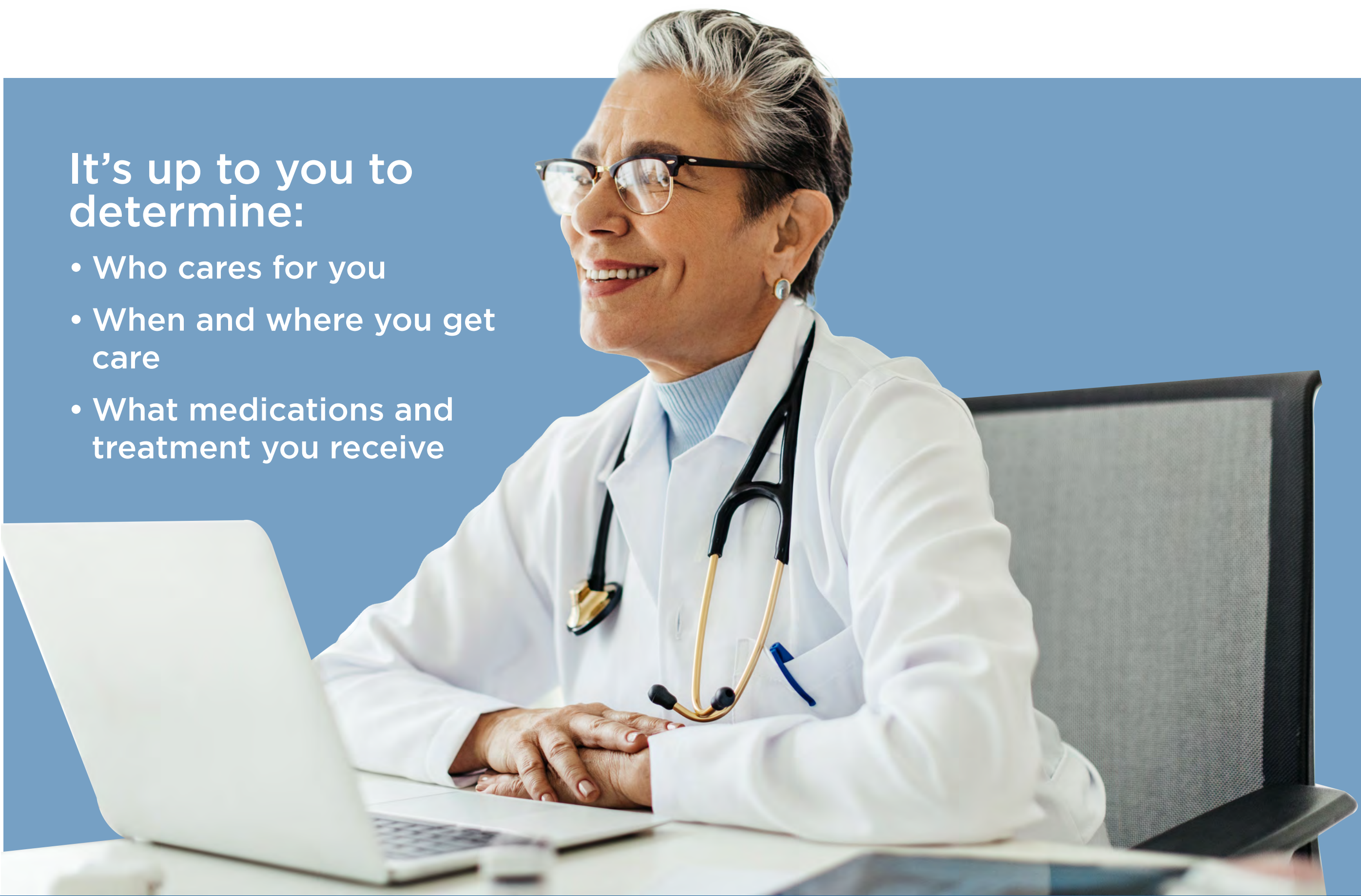


Dentist

You are an important part of your health care team.

It's up to you to determine:

- Who cares for you
- When and where you get care
- What medications and treatment you receive



As a patient of SJ Health, you will have access to many different services based on your health care needs. You will be asked to pick a **Primary Care Provider (PCP)** to partner with you on your health. We offer many services to help you live a happy and healthy life. This includes counseling and health education to support you in managing chronic diseases like diabetes, hypertension, and obesity.

No individual is denied service on the basis of race, religion, ethnicity, economic status, age, sex, sexual orientation, or disability. We offer free interpreter services at our health centers.



Health Center Locations

Stockton Health Center

1414 N California Street. Stockton, CA 95202

French Camp Health Center

500 W Hospital Road. French Camp, CA 95231

Manteca Health Center

283 Spreckels Ave. Manteca, CA 95336

sjhealth.org